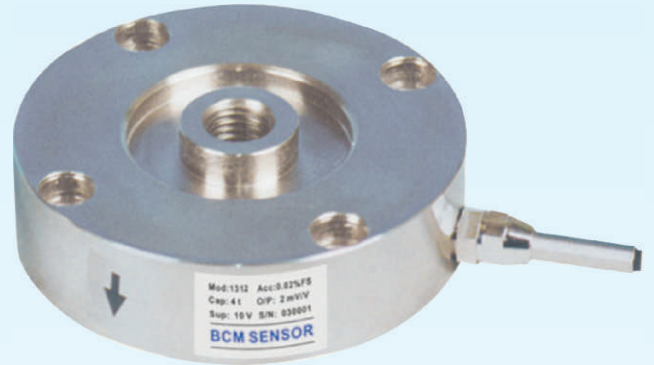


Model 136R Shear-web Load Cells

Features

- shear-web configuration
- low profile
- capacity ranges from 30 kg to 1000 kg
- accuracy up to 0.05 %fs
- aluminum alloy construction with anodized treatment
- environment protection IP 66



Applications

- vehicle scales
- tank and hopper scales

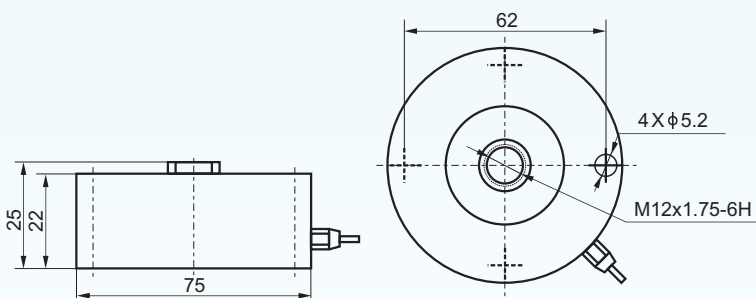
Description

Model 136R is load cell made of shear-web working principle, and is designed to measure compression loads. These load cells are relatively insensitive to the extraneous load and moments (torque).

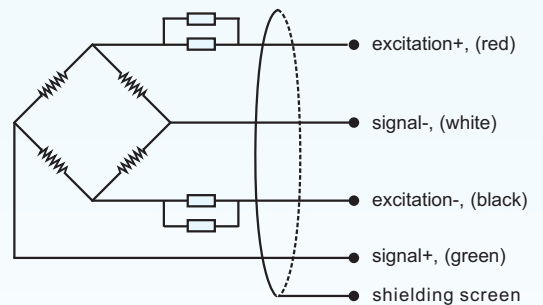
136R load cells have wide load capacities from 30 kg to 1000 kg, and the measuring accuracy is up to 0.05%fs (fs = full scale).

136R load cells are low profile products suitable to be used in space restricted environment. Made from high strength aluminum alloy, 136R load cells are rugged in design and can be used in applications in harsh industrial environment. 136R load cells are widely used in vehicle scales, tank and hopper scales.

Dimensions



Electrical connections



Model 136R

Shear-web Load Cells



Technical Data

parameters	units	specifications
capacity	kg	30, 50, 70, 100, 200, 300, 500, 1000
safe load limit	%fs	120
ultimate overload	%fs	150
output sensitivity at fs	mV/V	1.5 ± 0.1
zero unbalance	%fso	± 1
non-linearity	%fs	± 0.05
hysteresis	%fs	± 0.05
repeatability	%fs	± 0.02
creep error (30 min.)	%fs	± 0.03
excitation (supply voltage)	Vdc	10 (recommended), 9, ..., 12
max. excitation voltage	Vdc	15
input resistance	Ω	770 ± 10
output resistance	Ω	700 ± 10
insulation resistance	MΩ	≥ 5000@50 Vdc
storage temp. range	°C	-35 ~ +80
operating temp. range	°C	-35 ~ +70
compensated temp. range	°C	-10 ~ +55
temp. coefficient of span	%fs/°C	± 0.002
temp. coefficient of zero	%fs/°C	± 0.005
load cell body material		aluminum alloy
sealing		potted
mechanical interface		refer to the dimensions on the datasheet
electrical interface		Φ 4,7 mm, 4-conductor shielded cable, PVC, 3.5 m
environment protection		IP 66
unit weight	kg	~1.8

The listed specifications are subject to change without prior notice.



BCM SENSOR TECHNOLOGIES BVBA

ISO9001 Certified Company

Model 136R

Shear-web Load Cells



Ordering Information

position (pos.) 1: model									
136R: made from aluminum alloy									
pos. 2: capacities									
30 kg 100 kg 1000 kg 50 kg 200 kg 70 kg 300 kg 500 kg 700 kg									
pos. 3: output sensitivity									
1.5 mV/V									
pos. 4: non-linearity or accuracy class									
0.05 %fs									
pos. 5: bridge resistance									
700 Ω (R _{in} = 770±10 Ω, R _{out} = 700±10 Ω)									
pos. 6: threads									
4xΦ5,2									
pos. 7: electrical interface									
cable, code = diameter(Φ)/number of conductors/cable jacket/cable length 4.7/4/PVC/3.5=Φ4.7mm,4-conductors shielded, PVC, 3.5*m									
pos. 8: environment protection									
IP 66									
pos. 9: accessories for installation									
NA**. In case of "NA", pos.9 can be omitted.									
pos. 10: customized spec's									
When any customized spec's are required, the customer needs to add "C" as the last parameter in the ordering code, and specifies the wished spec's on his order clearly. The customized spec's needs to be confirmed in advance by BCM's sales representative. Code "C" can be omitted if no customized spec's are required.									
pos.1	pos. 2	pos. 3	pos. 4	pos. 5	pos. 6	pos. 7	pos. 8	pos. 9	pos. 10

*: This value can also be a customized value.

** : NA = not available or not applicable

example: 136R-500kg-1.5mV/V-0.05%fs-700Ω-4xΦ5.2-4.7/4/PVC/3.8-IP66-C



BCM SENSOR TECHNOLOGIES BVBA

ISO9001 Certified Company

Industriepark Zone 4, Brechtsebaan 2
B-2900 Schoten - Antwerpen, BELGIUM

Tel.: +32-3-238 6469
Fax: +32-3-238 4171

website: www.bcmsensor.com
email: sales@bcmsensor.com