

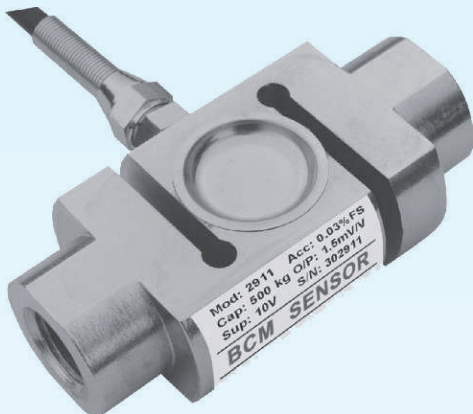
Model 2911 Force Transducers

Features

- for tensile and compressive force measurement
- range from 100 kg to 1000 kg
- accuracy of 0.03 %fs
- mild steel construction with nickel plated surface treatment
- environment protection up to IP 67

Applications

- hopper weighing
- batch grading



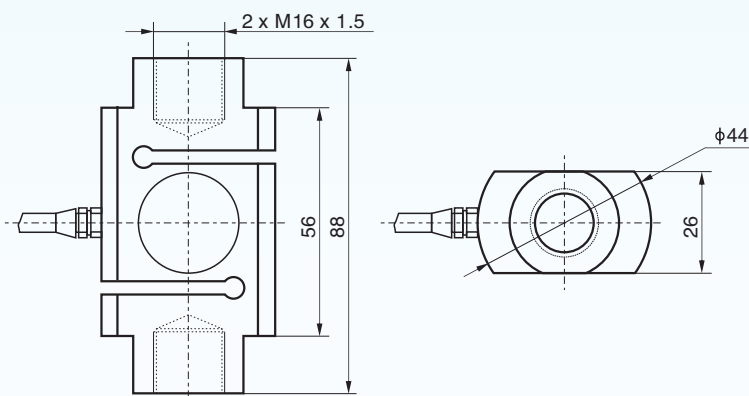
Description

2911 force transducers are designed to measure both tensile and compressive forces. The standard metric threads at each end of the transducers allow an easy installation with the standard rod end bearings.

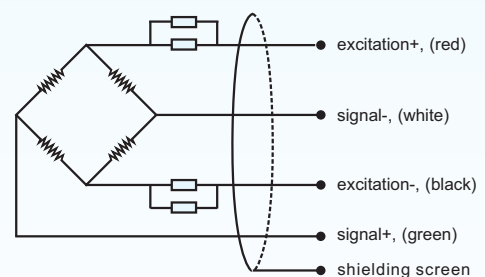
The capacities of 2911 range from 100 kg to 1000 kg with a measuring accuracy of 0.03%fs. Made from mild steel, 2911 force transducers can be produced to have a protection grade of IP 67.

These force transducers feature compact and robust construction and are suitable to be used under harsh industrial environment. Typical applications of 2911 force transducers include hopper weighing systems and batch grading systems.

Dimensions



Electrical Connection



BCM SENSOR TECHNOLOGIES BVBA

Model 2911

Force Transducers



Technical Data

parameters	units	specifications
capacity	kg	100, 200, 300, 500, 700, 1000
safe load limit	%fs	150
ultimate overload	%fs	200
output sensitivity at fs	mV/V	1.5 ± 0.05
zero unbalance	%fso	± 1
non-linearity	%fs	± 0.03
hysteresis	%fs	± 0.03
repeatability	%fs	± 0.02
creep error (30 min.)	%fs	± 0.03
excitation (supply voltage)	Vdc	10
max. excitation voltage	Vdc	15
input resistance	Ω	410 ± 30
output resistance	Ω	350 ± 10
insulation resistance	MΩ	≥ 5000@50 Vdc
storage temp. range	°C	-35 ~ +80
operating temp. range	°C	-30 ~ +80
compensated temp. range	°C	-10 ~ +55
temp. coefficient of sensitivity	%fs/°C	± 0.02
temp. coefficient of zero	%fs/°C	± 0.02
load cell body material		mild steel
sealing		potted
mechanical interface		refer to the dimensions on the datasheets
electrical interface		Φ5.7 mm, 4-conductor shielded cable, PVC jacket, 3.5 m
environment protection		IP 66 (standard), IP 67
unit weight	kg	to be confirmed when order

The listed specifications are subject to change without prior notice.

BCM SENSOR TECHNOLOGIES BVBA

Industriepark Zone 4, Brechtsebaan 2
B-2900 Schoten - Antwerpen, BELGIUM

Tel.: +32-3-238 6469
Fax: +32-3-238 4171

website: www.bcmsensor.com
email: sales@bcmsensor.com

Ordering Information

position (pos.) 1: model									
2911: made from mild steel									
pos. 2: capacities									
100 kg 1000 kg 200 kg 300 kg 500 kg 700 kg									
pos. 3: output sensitivity									
1.5 mV/V									
pos. 4: non-linearity or accuracy class									
0.03 %fs									
pos. 5: bridge resistance									
350 Ω (R _{in} = 410±30 Ω, R _{out} = 350±10 Ω)									
pos. 6: mechanical interface									
Refer to the dimensions on the datasheets. Pos. 6 can be omitted from the ordering code.									
pos. 7: electrical interface									
cable, code = diameter(Φ)/number of conductors/cable jacket/cable length 5.7/4/PVC/3.5 = Φ5.7 mm, 4-conductors shielded, PVC, length = 3.5*m									
pos. 8: environment protection									
IP 66 (standard) IP 67									
pos. 9: accessories for installation									
N = NA**. In case of "NA", pos.9 can be omitted.									
pos. 10: customized spec's									
When any customized spec's are required, the customer needs to add "C" as the last parameter in the ordering code, and specifies the wished spec's on his order clearly. The customized spec's needs to be confirmed in advance by BCM's sales representative. Code "C" can be omitted if no customized spec's are required.									
pos.1	pos. 2	pos. 3	pos. 4	pos. 5	pos. 6	pos. 7	pos. 8	pos. 9	pos. 10

*: This value can also be a customized value.

** : NA = not available or not applicable

example: 2911-500kg-1.5mV/V-0.03%fs-350Ω-5.7/4/PVC/3.5-IP66-C

