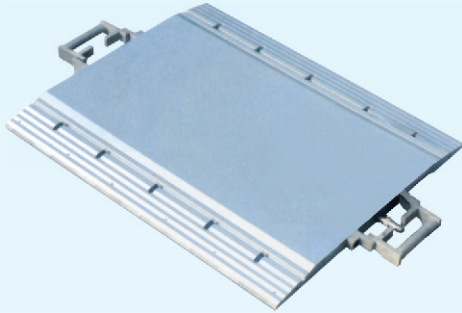


Model AWP6-a Portable Weighing Platform

BCM model AWP6-a portable weighing platform are designed for axle load measurement applications, with seven steel strip embedded to strengthen the construction, the dynamic features and accuracy are improved greatly. which are 3%fso at speed of 1~5 km/h, 5%fso, at 5~10 km/h, while the static accuracy up to 0.2%fso, width of 700 mm also make it easily be used in many types of vehicles.

This weighing platform system can be used in measurement of vehicle weight while it pass through the platform on road, including vehicle overload alarm, overload presentiment applications.

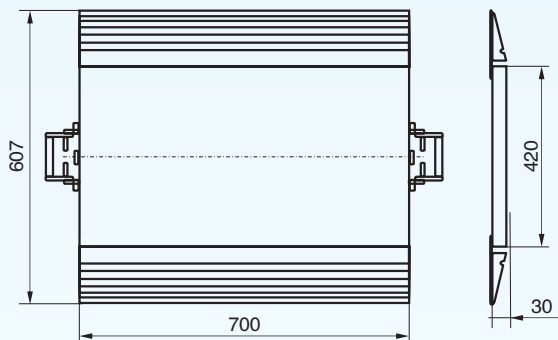


Features:

- **type:** compressive force type
- **material:** aluminum alloy of high strength with 7 steel strip embeded inside
- **surface:** anodized treatment
- **protection:** IP 66
- **application:** vehicle weighing system, vehicle overload alarm, vehicle overload presentiment

Suggested force size: 700 x 350 mm

Dimensions:

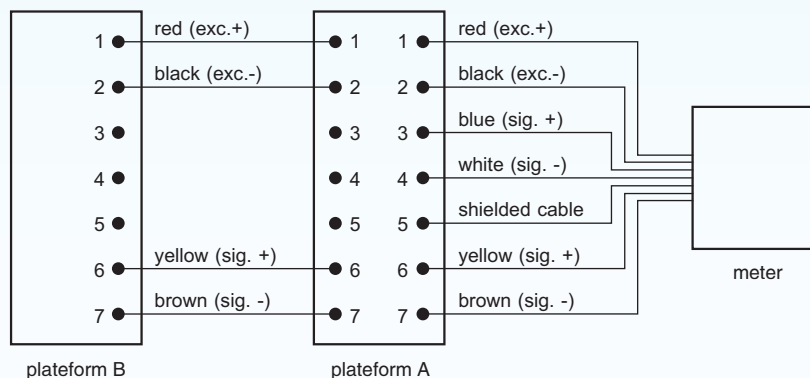


Power Supply & measurement meter

separating circuits system with printing function



Electrical Connections:



BCM SENSOR TECHNOLOGIES bvba

Model AWP6-a Portable Weighing Platform



Specifications:

rated full scale (FS) load	t	15, 20 (each platform)
signal sensitivity load	t	0.2
safe overload	%FS	120
ultimate overload	%FS	150
1/4 platform ultimate overload	%FS	40
output sensitivity at FS load	mV/V	1.2 ± 0.1(standard); 1.5 ± 0.1
zero offset	%FSO (*)	< ± 1 (*: FSO = full scale output)
excitation voltage	V dc/ac	10 (max. 12)
static accuracy (combined error)	%FSO	0.2; 0.3; 0.5 (standard)
dynamic accuracy (combined error)	%FSO	3 (1~5 km/h); 5 (5~10 km/h)
non-linearity	%FSO	0.2; 0.5 (standard)
hysteresis	%FSO	0.1
repeatability	%FSO	0.1
compensated temperature range	°C	-10 ~ +50
operating temperature range	°C	-30 ~ +80
temperature effect on ZERO	%FSO/10 °C	0.1
temperature effect on SPAN	%FSO/10 °C	0.1
input impedance	Ohm	1200 ± 50
output impedance	Ohm	1200 ± 50
insulation resistance	mega Ohm	> 5000 @ 50 Vdc
environment protection	IP rating	IP 66
electrical connection	shielded PVC cable with steel tube cover	7 core, φ 5.8 mm, 10 m length (platform to meter) 4 core, φ 5.8 mm, 3 m length (platform to platform)
net weight	kg	~30

The listed specifications and dimensions are subject to change without prior notice.

How to order: model - capacity - output - static accuracy - excitation voltage - electrical connection
ordering code example: AWP6-a - 20t - 1.2 mV/V - 0.3 %fso - 10 Vdc - IP 66 - 10m length to meter
 (others to standard)



BCM SENSOR TECHNOLOGIES bvba

ISO9001 Certified Company

Industriepark, Brechtsebaan 2
 B-2900 Schoten - Antwerpen, BELGIUM

Tel.: +32-3-238 6469
 Fax: +32-3-238 4171

website: www.bcmsensor.com
 email: sales@bcmsensor.com